

MADE IN KOREA

BIO TECHNOLOGY
boditech

Sensible solution for your patient



www.boditech.co.kr

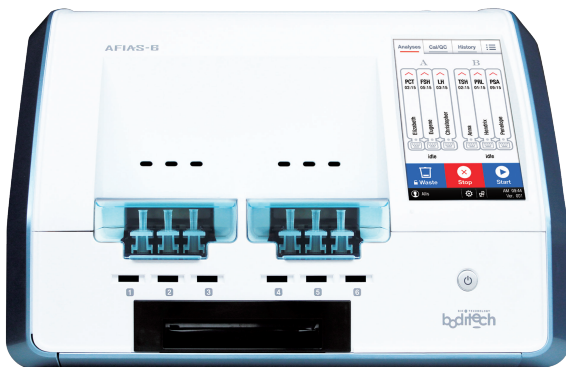
AFIAS

AFIAS-6

Versatile Desktop Immuno-Analyzer

Automated desktop analyzer

- 10 μ L, 30 μ L, 50 μ L finger-prick blood
- 6 different tests on 6 different channels
- Bay random access (2 bays)



All-in-one cartridge format
Just load sample & press start



AFIAS-1

Doctor's reliable associate

Automated desktop analyzer

- 1 channel
- LIS/HIS connectivity
- All-in-one cartridge
- 10 μ L, 30 μ L, 50 μ L finger-prick blood
- Walk away function



Specifications

QC/Calibration

2 calibrators & 2 controls
Internal & external controls

Interface

7" touch screen
Built-in thermal printer
RS 232/USB port/Ethernet/SD card slot
LIS/HIS compatible

Memory

5,000 patient results
5,000 QC results
500 ID chips
100 User IDs

Throughput

Up to 36 tests/hour

Analyzer

420 x 336 x 293 mm
15.1 kgs
100 - 240V AC, 50-60Hz
Internal temperature control

Specifications

QC/Calibration

2 calibrators & 2 controls
Internal & external controls available

Interface

5" touch screen
Built-in thermal printer
RS 232/USB port/Ethernet/SD card slot
LIS/HIS compatible

Memory

5,000 patient results
5,000 QC results
500 ID chips
100 User IDs

Throughput

Up to 10 tests/hour

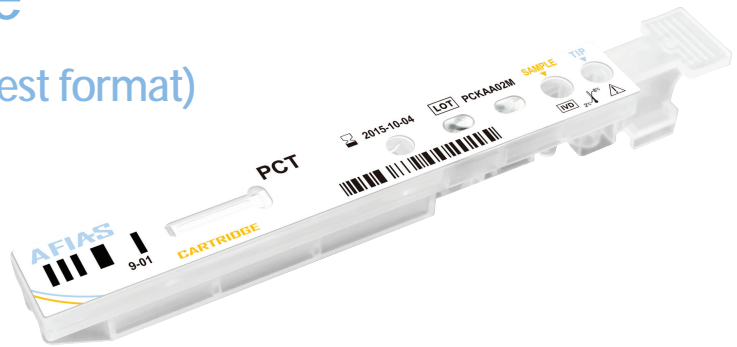
Analyzer

320 x 204 x 180 mm
3.9 kgs
100 - 240V AC, 50-60Hz
Internal temperature control

All-in-One Cartridge

Ready-to-use reagent (single test format)

| | |
|---------------------|--------------------------|
| Storage | 2 – 8°C for 20 months |
| Sample type | Serum/plasma/whole blood |
| Packing unit | 24 tests/Kit |
| Test time | 3 – 15 min/each |



Can use whole blood, Finger prick or Venous

10 µL, 30 µL, 50 µL whole blood

- No syringes ■ No collection tube
- No pipettes ■ No centrifuge

Flexibility of using C-tip™ as well as regular tube blood.



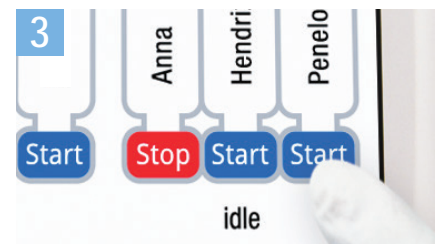
3 simple steps



Step 1: Collect blood

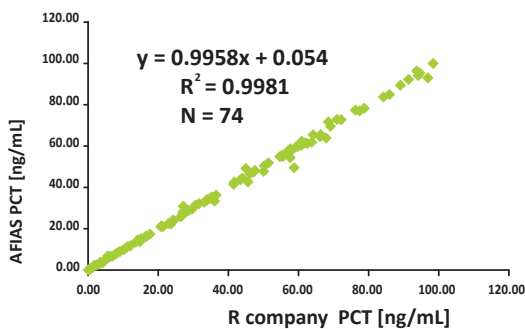


Step 2: Place the C-tip™



Step 3: Press START

Study Results



| PCT Con. (ng/mL) | Intra-assay | | | Inter-assay | | |
|---------------------|-------------|------|------|-------------|------|------|
| | Avg. | SD | CV% | Avg. | SD | CV% |
| 0.1 | 0.12 | 0.00 | 3.87 | 0.12 | 0.01 | 6.78 |
| 2.0 | 2.00 | 0.05 | 2.58 | 2.01 | 0.03 | 1.47 |
| 100 | 99.15 | 1.48 | 1.49 | 99.80 | 0.94 | 0.94 |

AFIAS Parameters



| Category | Item | AFIAS-1 | AFIAS-6 | Sample type | Working range |
|-----------|----------------|---------|---------|---------------|--|
| Cardiac | Tn-I Plus | ● | ● | WB/S/P | 0.01-15 ng/mL |
| | CK-MB | ● | ● | WB/S/P | 3-100 ng/mL |
| | D-Dimer | ● | ● | WB/P | 50-10,000 ng/mL |
| | NT-proBNP | ● | ● | WB/S/P | 10-30,000 pg/mL |
| | Myoglobin | ● | ● | WB/S/P | 2-500 ng/mL |
| | Cardiac Triple | ● | ● | WB/S/P | Tn-I 0.01-15 ng/mL CK-MB 3-100 ng/mL Myoglobin 5-500 ng/mL |
| | ST2 | ● | ● | WB/S/P | 3.1-200 ng/mL |
| Cancer | PSA | ● | ● | WB/S/P | 0.5-100.0 ng/mL |
| | PSA Plus | ● | ● | WB/S/P | 0.07-50 ng/mL |
| | AFP | ● | ● | WB/S/P | 5-350 ng/mL |
| | AFP Plus | ● | ● | WB/S/P | 0.5-350 ng/mL |
| | CEA | ● | ● | S/P | 1-500 ng/mL |
| | CEA Plus | ● | ● | WB/S/P | 0.5-200 ng/mL |
| Diabetes | HbA1c | ● | ● | WB | (NGSP) 4-15 % |
| | Microalbumin | ● | ● | Urine | 2-300 mg/L |
| Hormone | TSH | ● | ● | WB/S/P | 0.09-80.0 μIU/mL (WB: 0.4-80.0 μIU/mL) |
| | TSH Plus | ● | ● | WB/S/P | 0.1-50 μIU/mL |
| | T3 | ● | ● | S/P | 0.77-7.70 nmol/L |
| | T4 | ● | ● | S/P | 10.23-300.00 nmol/L |
| | FSH | ● | ● | WB/S/P | 1-100 mIU/mL |
| | FSH Plus | ● | ● | WB/S/P | 0.1-110 mIU/mL |
| | Total βhCG | ● | ● | WB/S/P | 5-50,000 mIU/mL |
| | β-HCG Plus | ● | ● | WB/S/P | 2-1,500 mIU/mL |
| | LH | ● | ● | WB/S/P | 1-100 mIU/mL |
| | LH Plus | ● | ● | WB/S/P | 0.1-100.0 mIU/mL |
| | PRL | ● | ● | WB/S/P | 1-100 ng/mL |
| | PRL Plus | ● | ● | WB/S/P | 0.5-200 ng/mL |
| | Testosterone | ● | ● | S/P | 1-10 ng/mL |
| | Cortisol | ● | ● | WB/S/P | 80-800 nmol/L |
| AMH | ● | ● | S/P | 0.02-10 ng/mL | |
| Infection | CRP | ● | ● | WB/S/P | 0.5-200 mg/L |
| | PCT | ● | ● | WB/S/P | 0.1-100.0 ng/mL |
| | PCT Plus | ● | ● | WB/S/P | 0.02- 50 ng/mL |
| | HBsAg | ● | ● | WB/S/P | 0-300 COI |
| | Anti-HBs | ● | ● | WB/S/P | 0-500 mIU/mL |
| | Anti-HCV | ● | ● | WB/S/P | 0-300 COI |
| | ROTA | ● | ● | Feces | qualitative (0-200 COI) |
| | NORO | ● | ● | Feces | qualitative (0-200 COI) |
| | Rota/Adeno | ● | ● | Feces | qualitative (0-200 COI) |
| | Dengue IgG/IgM | ● | ● | WB/S/P | qualitative (0-200 COI) |
| | Dengue NS1 Ag | ● | ● | WB/S/P | qualitative (0-200 COI) |
| Others | Ferritin | ● | ● | S/P | 10-1,000 ng/mL |
| | Vitamin D | ● | ● | S/P | 8-70 ng/mL |
| | Anti-CCP Plus | ● | ● | WB/S/P | 3.2-300 U/mL(Semi-quantitative) |

* Coming soon