

Reliable performance – confidence in the results

XF-1600 flow cytometer



Together for a better
healthcare journey

Increased efficiency and confidence for clinical

Perfectly orchestrated clinical flow cytometry

The XF-1600 flow cytometer is an integral part of our 'perfectly orchestrated' clinical flow cytometry solution. It demonstrates a reliable performance that is backed by the excellent service Sysmex is known for. The XF-1600 helps laboratories simplify their processes and increase workflow efficiency with confidence in their results. Scan the QR code to find out more about our 'orchestra' on the whole as well as the other 'players' of the ensemble.



Sysmex XF-1600 at your service

The XF-1600 is a robust, highly efficient flow cytometer offering reliable and rapid data acquisition for immunophenotyping at high flow rates without loss of sensitivity. It integrates a multi-laser optical layout with a fluidics design proven in Sysmex's XN-Series haematology analysers for stable and reliable performance, complemented by an intuitive, easy-to-use graphical user interface for quick and easy navigation. Flexible sample tube handling options support both single tube processing in manual mode or walk-away acquisition in automated mode.

14 colours available on the XF-1600 – scalability to suit your needs

The XF-1600 flow cytometer is scalable to your actual demands: it is available in two versions, either with 10 or with 14 colours. An upgrade kit allows the upscaling of colours on site – ensuring your system grows with your diagnostic needs.

Instrument–instrument standardisation

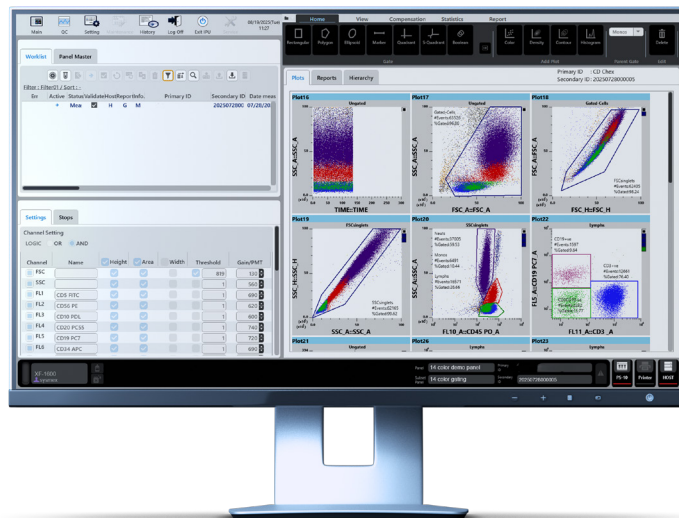
Laboratories requiring instrument-to-instrument standardisation have the ability with the XF-1600 to clone panel settings from one analyser to another, ensuring that analyses performed on different instruments, even on different sites, are comparable.

laboratories

Intuitive XF-1600 software – exceptional ease of use

Following the Sysmex Silent Design® concept that usability is an essential part of a product's performance, Sysmex's intuitive user interface makes the XF-1600 easy to use. Users can access all the major functions in just one click from the main screen.

- The user-friendly 'Panel Master' allows efficient panel setup and quick access to daughter tube panel information and settings.
- A wide variety of axes and plot types are easily accessible – right there where you need them: histograms, contour plots, colour plots and density plots.
- Easily accessible hierarchy information and statistics



XF-1600 result display – all major functions are just one click away

Supportive documentation and traceability to ease quality management

The XF-1600 supports accreditation compliance through a comprehensive digital audit trail. The 'History' function provides access to audit, reagent replacement, maintenance, and error logs – all exportable to external storage or hospital networks for full traceability and documentation of instrument and user activity.

Sysmex CyFlow™ antibodies

Discover our extensive portfolio of CE-IVD and RUO antibodies here:



Specifications

Principles and technology

3 spatially separated lasers: 405 nm, 488 nm, and 638 nm
operating system (OS): Windows® 10 professional (64bit)
FCS format 3.0

Fluorescence detectors

up to 14 fluorescence channels

Laser	Channel	Filter	Laser	Channel	Filter	Laser	Channel	Filter
488 nm	FL1	530/30	638 nm	FL6	660/20	405 nm	FL9	450/50
	FL2	580/30		FL7	720/40		FL10	540/80
	FL3	610/14		FL8	780/60		FL11	603/30
	FL4	700/50					FL12	670/24
	FL5	750 LP					FL13	710/50
							FL14	750LP

Parameters

49 measurable parameters simultaneously record pulse-area, -height, -width and -time data from up to 16 detection channels

Sample tube capacity

standard single tube loading port (including STAT function) and rotor-based autoloader with optional sample mixing capabilities
12 or 24 tubes per rotor

Sample flow rate

5 µL per minute
30 µL per minute and 60 µL per minute
90 µL per minute and 120 µL per minute

Sample acquisition rate

up to 50,000 events per second and 5 million events per data file

Sensitivity: MESF

FITC < 100
PE < 50
APC < 100

Particle resolution

minimum 0.5 µm and up to 50 µm on scatter (FSC and SSC)

Carryover

< 0.1 %

Sample tube carrier

sample tube rotors are compatible with the Sample Preparation System PS-10 and the Rotolavit II-S automated cell washer

Dimensions/weight

W × H × D [mm/kg]

approx. 700 × 740 × 630 / approx. 100

XF-1600, PS-10 and Rotolavit II-S: compliant with CE IVD.
CyFlow™ is a trade mark of Sysmex Partec GmbH.

Distributor EMEA: Sysmex Europe SE · www.sysmex-europe.com

Manufacturer XF-1600 and PS-10: Sysmex Corporation · www.sysmex.co.jp

Manufacturer antibodies: Sysmex Partec GmbH · www.sysmex-partec.com

Manufacturer Rotolavit II-S: Hettich AG · www.hettich.ch

You will find your local Sysmex representative's address under www.sysmex-europe.com/contacts

The products listed may not be available for sale in all countries. Please contact your Sysmex representative for availability.

www.sysmex-europe.com/XF-1600